



BRANDON
UNIVERSITY

Rural Works: A Rural Policy Think Tank Event



Celebrating Partnership Dimensions of Rural Development

Bill Ashton, MCIP, PhD
Director, Rural Development Institute
Brandon University

November 6, 2014



RURAL
DEVELOPMENT
INSTITUTE
25th Anniversary
Brandon University

In Manitoba today, *write*
1 characteristic
of rural
development

rural
development
characteristics

-
-
-

Celebrating Partnerships



Review achievements at RDI resulting from partnerships to identify characteristics of **rural development**

INSIGHT | FORESIGHT | INNOVATE | ACTION



Celebrating Partnerships

INSIGHT

- 1987 Brandon University decides
- 1989 Official opening
- Conference

Seeing a need or opportunity and rallying ideas, interests, & resources



Celebrating Partnerships

fostering and supporting

Rural Development

- Involve others & their agendas
- Leaders & mission
- Institutional structure
- Funding



Celebrating Partnerships

FORESIGHT

- Learning is essential
- Be informed from everywhere
- Rural, a specialization
- Research informs policy

*Change what we know to
change what we do*

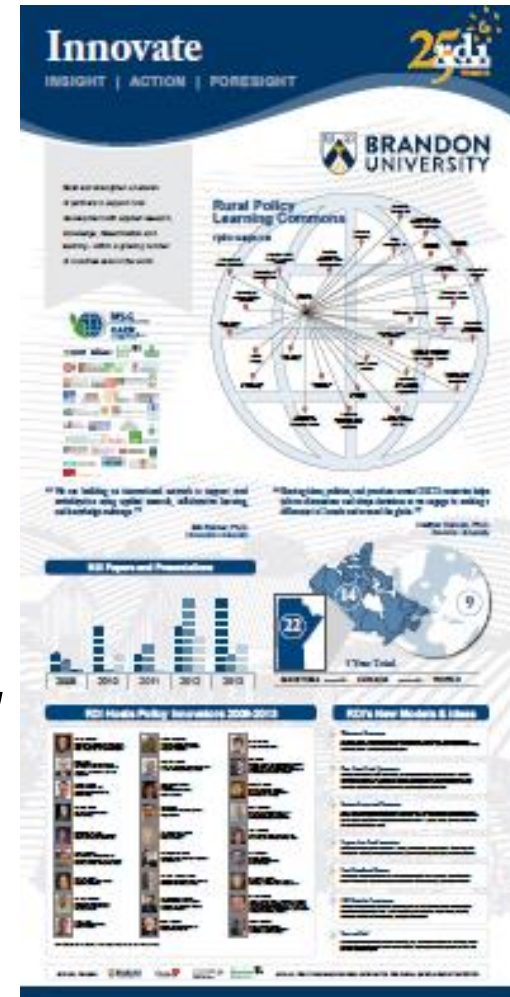


Celebrating Partnerships

INNOVATE

- Networks
- Knowledge mobilization
- Public policy speakers
- New models & ideas

Consider ‘rural by design’ as a future rather than it being more accidental

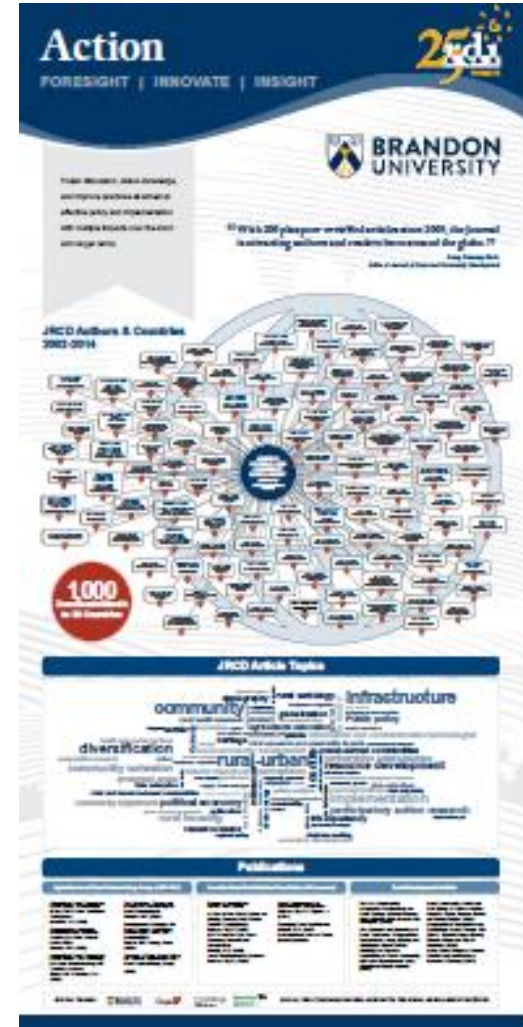


Celebrating Partnerships

ACTION

- Share ideas, practices & policies
- Multi-agency, horizontal
- Policy as change
- Sectoral & placed-based

*Bring the world to
Manitoba & Manitoba to
the world*

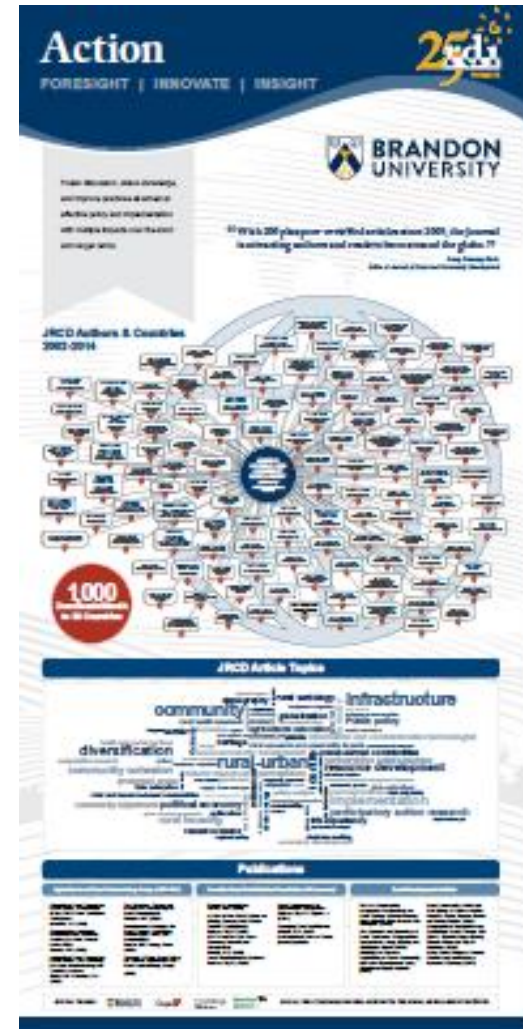


Celebrating Partnerships

fostering and supporting

Rural Development

- Create & distribute ideas & practices
- Pilot demonstration projects
- Welcome opposition



Summary

Rural development is...?

Insight
ACTION | FORESIGHT | INNOVATE

Wednesday, October 23, 2009
See the grand opening of Brandon University's Rural Development Institute. It took courage to declare rural as important and worthy of investigation.

Motion: that the Government establish the principle of the establishment of a Rural Development Institute at Brandon University and that the funding for the Institute be requested from the Manitoba Universities Development Fund.

Thursday, July 16, 1987
Open Session minutes of the Board of Governors

A new agenda for rural Manitoba
Relations with Ottawa at crossroads

The RDI
Spread public sector around, gov't urged

University approves research program

Now is the time to ease inquiries, officials told

25th Anniversary
RURAL DEVELOPMENT INSTITUTE
25th Anniversary
Brandon University

Building a strong view by supporting rural and related research by establishing a Centre of Studies for Manitoba Rural Development, and Brandon University.

44 Growing rural researchers is part of our job.
Rural Development Institute, Brandon University

International Comparative Rural Policy Institutes

Rural Development Networks

Graduate Students

25th Anniversary
RURAL DEVELOPMENT INSTITUTE
25th Anniversary
Brandon University

Innovate
INSIGHT | ACTION | FORESIGHT
http://rplc-capr.ca

Build and strengthen a network of partners to support rural development with applied research, knowledge dissemination and learning - within a growing number of countries around the world.

Rural Policy Learning Commons

44 We are building an international network, or network of rural institutions using applied research, collaborative learning and knowledge exchange.
Bill Barrett, Ph.D.
Cornell University

44 Sharing ideas, policies and practices across OECD countries helps nations discover and share lessons as they engage in making a better tomorrow and share business as they engage in making a better tomorrow in Canada and around the globe.
Heather Duncan, Ph.D.
Brandon University

Conferences Mobilizing Knowledge in MB

5 Year Total
22 MANITOBA 14 CANADA 9 WORLD

RDI Hosts Policy Innovators 2009-2013

RDI's New Models & Ideas

25th Anniversary
RURAL DEVELOPMENT INSTITUTE
25th Anniversary
Brandon University

Action
FORESIGHT | INNOVATE | INSIGHT

From decisions, shared knowledge and proven practices all aimed at effective policy and implementation with multiple impacts over the short and longer terms.

44 With 200 plus peer-reviewed articles since 2005, the Journal is attracting authors and readers from around the globe.
Dr. Patricia Phillips
Editor of Journal of Rural and Community Development

JRCD Authors & Countries 2002-2014

1,000+ Contributions of Countries

JRCD Article Topics

community
collaboration
rural-urban
rural development
rural economic
rural housing
rural research

infrastructure
public policy
resource development
implementation
participatory action research

Publications

25th Anniversary
RURAL DEVELOPMENT INSTITUTE
25th Anniversary
Brandon University

fostering and supporting

Rural development ...

- Leadership & commitment
- Funding & projects
- Research & learning
- Long view & short term
- Multi-stakeholders
- Top down & bottom up
- Attitude of the possible
- Policy as change



In Manitoba today, *write* 1 characteristic of rural development

rural
development
characteristics

-
-
-



BRANDON
UNIVERSITY

Rural Works Thank You



RURAL
DEVELOPMENT
INSTITUTE
25th Anniversary
Brandon University